

RESIDENZA AL MOLINETTO - LUINO



massimiliano saracino architetto



massimiliano saracino architetto

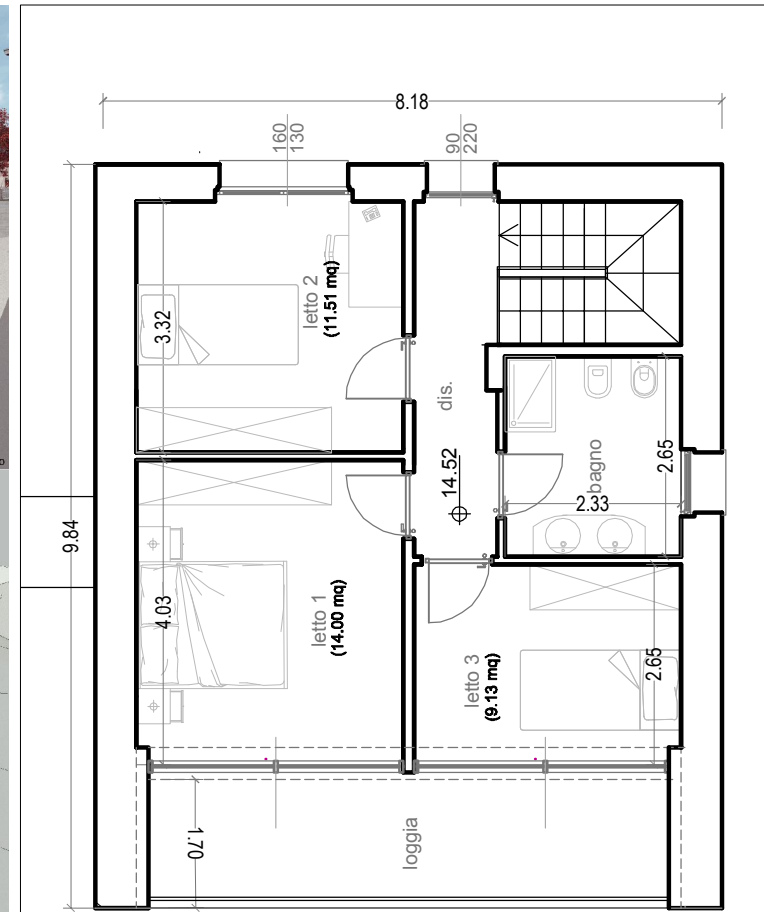


massimiliano saracino architetto

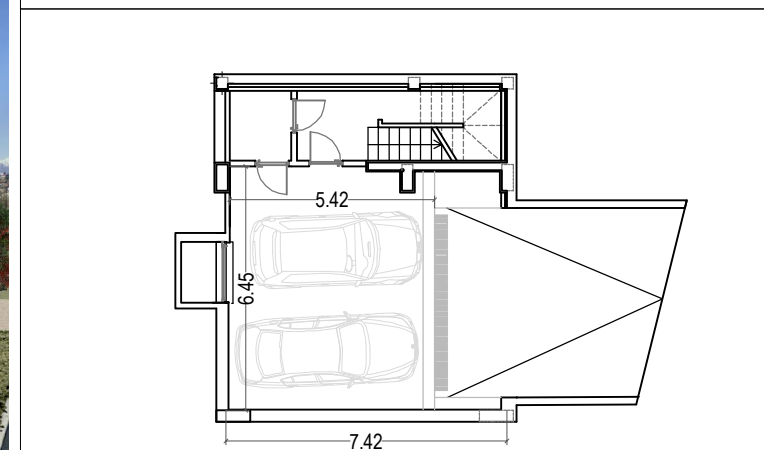


massimiliano saracino architetto

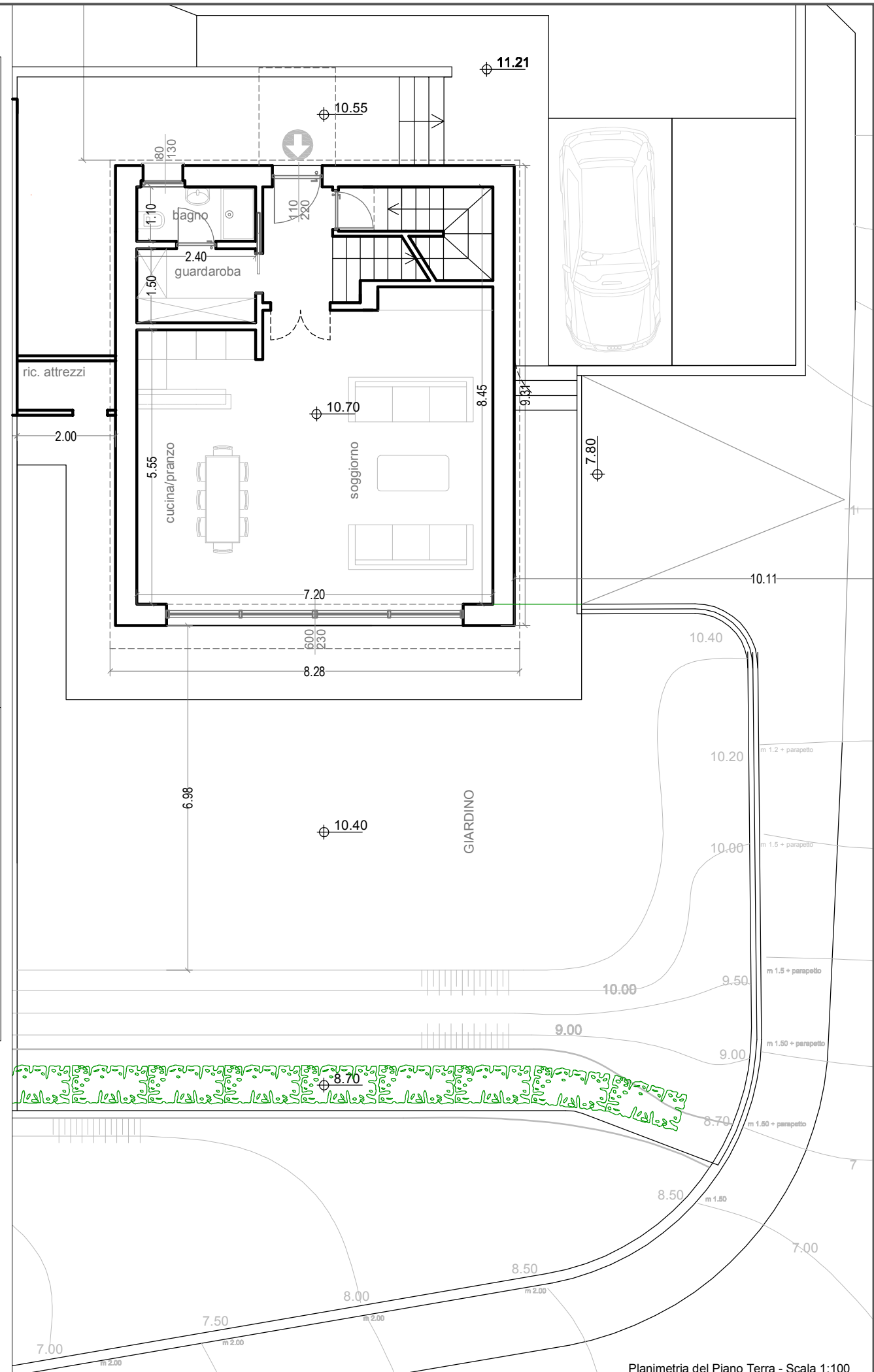
CASA A



Primo Piano - Scala 1:100



Primo interrato - Scala 1:200



Planimetria del Piano Terra - Scala 1:100

CASA A				
				Sc (mq)
				67.27
al netto dei muri perimetrali (premio risparmio energetico)				
	Slp (mq)	h (m)		V (mc)
piano terra	60.84	3.10		188.60
primo piano	51.98	2.70		140.35
(sup utile - comp tramezzi)	112.82			328.95
piano interrato	60.84			